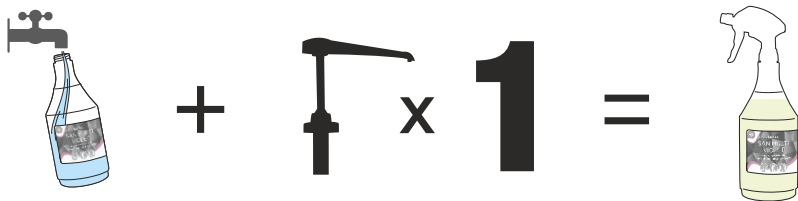


LUFRA

SAN MULTI VIOLET

A concentrated fragranced daily cleaner/ disinfectant suitable for use on all hard surfaces.

DILUTION RATE



METHOD OF USE



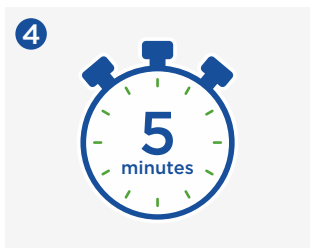
Fill an empty trigger bottle with 600ml of clean water.



Add 1 shot (30ml) of Lufra San Multi Violet to the trigger bottle.



Spray diluted Lufra San Multi Violet onto the area and work into the surface with a cloth.



For efficacy against bacteria, allow a 5 minute contact time on the surface.



Wipe away with a clean cloth. Leave the surface to air dry.

EFFICACY STANDARDS

BACTERICIDAL - EN 1276

CONTACT TIME	DILUTION	KILL RATE
5 Minutes	1 : 23	99.999%

ENVELOPED VIRUSES - EN 14476

CONTACT TIME	DILUTION	KILL RATE
60 Seconds	1 : 23	99.99%

All testing methods conducted in dirty conditions by an independent laboratory.

Use biocides safely. Always read the label and product information before use.

PRODUCT INFO



Pack Size:	5L
Product Code:	810
Odour:	Sweet
Colour:	Yellow
pH (undiluted):	6-8
Shelf life:	2 years



For Health & Safety information, please scan the QR code provided.

THINK SAFE, CLEAN GREEN

Christeyns Professional Hygiene UK Ltd | Clover House | Whaley Bridge
SK23 7DQ | T +44 (0) 1663 733 114 | W www.christeyns-ph.co.uk

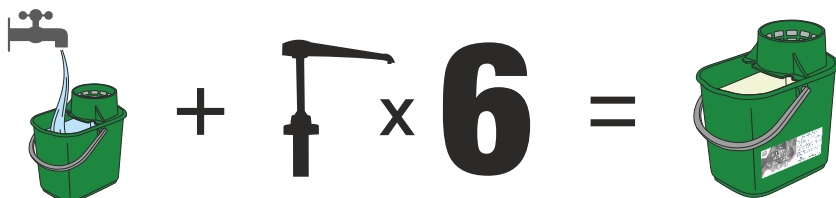

CHRISTEYNS
PROFESSIONAL HYGIENE

LUFRA

SAN MULTI VIOLET

A concentrated fragranced daily cleaner/ disinfectant suitable for use on all hard surfaces.

DILUTION RATE



METHOD OF USE



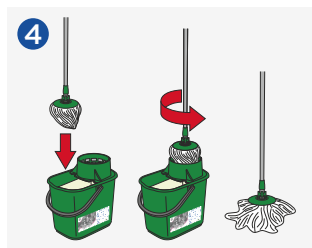
Place a wet floor sign in the area to be cleaned.



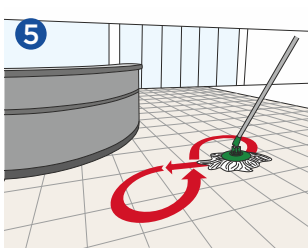
Fill an empty bucket with 5 litres of clean water.



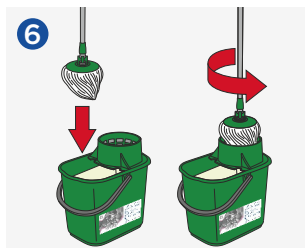
Dispense 6 pumps (180ml) of Lufra San Multi Violet into the bucket.



Immerse the clean mop head into the bucket of Lufra San Multi Violet solution and wring out the mop thoroughly.



Apply the mop to the floor and wipe in a figure of 8 motion, working the mop side to side.



Clean the dirty mop head in the bucket and repeat the previous steps until the floor is clean. Allow to air dry for a streak-free finish.

EFFICACY STANDARDS

BACTERICIDAL - EN 1276

CONTACT TIME	DILUTION	KILL RATE
5 Minutes	1 : 23	99.999%

ENVELOPED VIRUSES - EN 14476

CONTACT TIME	DILUTION	KILL RATE
60 Seconds	1 : 23	99.99%

All testing methods conducted in dirty conditions by an independent laboratory.

Use biocides safely. Always read the label and product information before use.

PRODUCT INFO



Pack Size:	5L
Product Code:	810
Odour:	Sweet
Colour:	Yellow
pH (undiluted):	6-8
Shelf life:	2 years



For Health & Safety information, please scan the QR code provided.

THINK SAFE, CLEAN GREEN

Christeyns Professional Hygiene UK Ltd | Clover House | Whaley Bridge
SK23 7DQ | T +44 (0) 1663 733 114 | W www.christeyns-ph.co.uk


CHRISTEYNS
PROFESSIONAL HYGIENE



DISINFECTANTS

LUFRA SAN MULTI VIOLET

CLEANER/DISINFECTANT



- KILLS BACTERIA
- EFFECTIVE AGAINST BACTERIA, YEAST AND ENVELOPED VIRUSES
- VIOLET FRAGRANCE

PRODUCT DESCRIPTION

LUFRA SAN MULTI VIOLET is a cleaner and disinfectant with a violet fragrance. LUFRA SAN MULTI VIOLET is neutral in pH with low foam and can be used by hand or through a scrubber drier.

Safe for use on all hard surfaces including stainless steel. Use to clean sinks, taps, baths, walls, doors, floors, fittings and fixtures, toilets, bidets and urinals. Suitable for disinfecting sports equipment, sunbeds and surfaces in changing rooms, saunas, steam rooms, etc.

EFFICACY

A concentrated cleaner-disinfectant. LUFRA SAN MULTI VIOLET has been tested against a range of standards, at a dilution as shown below by an independent laboratory.

STANDARD	DILUTION RATE	CONDITIONS	CONTACT TIME	PASSED
<u>Bactericidal</u>				
EN 1276	1:23 (4.2%)	Dirty	5 Minutes	≥5 log reduction
EN 13697	1:23 (4.2%)	Dirty	5 Minutes	≥5 log reduction
<u>Yeasticidal</u>				
EN 13697	1:23 (4.2%)	Dirty	5 Minutes	≥4 log reduction
EN 1650	1:23 (4.2%)	Dirty	5 Minutes	≥3 log reduction
<u>Virucidal</u> <u>(enveloped virus)</u>				
EN 14476 (MVA)	1:23 (4.2%)	Dirty	60 Seconds	≥4 log reduction

INSTRUCTIONS FOR USE

Dilute with water. Mop, spray or scrub with LUFRA SAN MULTI VIOLET. Allow the contact time shown in the table and then wipe away with a clean cloth. Leave the surface to air dry.

Use biocides safely. Always read the label and product information before use.

DILUTION RATE

Cleaning, Deodorising & Sanitising (Bacteria and Yeast)	1:23 (4.2%)
Cleaning, Deodorising & Sanitising (Enveloped Viruses)	1:23 (4.2%)

ADDITIONAL INFORMATION

Product Code:	810
pH Level:	6-8

STORAGE

Use above 5°C. Store preferably above 0°C.

PACKAGING

Jerry Can	5 Litre
-----------	---------

NON WARRANTY

This information is based on our current knowledge and is intended to describe the product for the purposes of health, safety and environmental requirements only. It should not therefore be construed as guaranteeing any specific property of the product.

